

St Judes Street Garden

Design Development

RIBA 2-3

15 November 2022

What you told us at the previous consultation

We are planning to make our borough cleaner, greener, and healthier. As part of this, we want to make some improvements to St Jude's Street Gardens.

A public consultation event was held at St Jude and St Paul's Primary school in June 2022. The main objectives were to gather ideas on how to improve the park from the local community.

Below is a summary of what you told us:

What do you like about the park?

- A local park where friends and family can meet
- A valuable green space in an urban area
- The children's playground
- The trainspotting deck, swings and slides
- The space acts as a community hub being located next to the school

Are there reasons why you don't currently use the park?

- Anti-social behaviour
- The park does not feel safe
- The playground is only for younger children, and the play equipment is outdated
- Lack of maintenance and litter
- The green area is difficult to access
- Dogs and dog fouling

What would you like to see included as part of any park improvements?

- Playground improvements to provide a better range of equipment for a wider age group
- More planting and greenery
- Introduction of more seating
- Measures to reduce anti-social behaviour, addressing the hidden corners
- Provision of a coffee shop
- Introduction of outdoor fitness
- Improved lighting
- A growing area for residents, a mural on the end gable of the adjacent house and a toilet

The key priorities which can be addressed from the consultation are:

- Updating and upgrading the playground facilities
- Improving the layout of the park to encourage more people to use the space and assist in tackling anti-social behaviour
- Enhance biodiversity

Purpose of this consultation

The Landscape architects have now developed two design ideas for the park, responding to the community feedback received in June.

These design ideas are a starting point for stimulating the discussion with the local community and project stakeholders.

Your thoughts and comments on the two options will help shape a definitive design.

To access the on-line questionnaire to leave your feedback on the design ideas, please scan the QR code.



Alternatively, you can access the questionnaire at the project web-site: www.islington.gov.uk/stjudestgarden

The next steps

Further consultation with local schools and stakeholders will take place to develop detailed designs for the playground, and measures to tackle anti-social behaviour, based on the preferred park layout identified through this consultation.

You can find out more information about the project at: www.islington.gov.uk/stjudestgarden

If you have any queries please email StJudeStGardenRenewal@islington.gov.uk

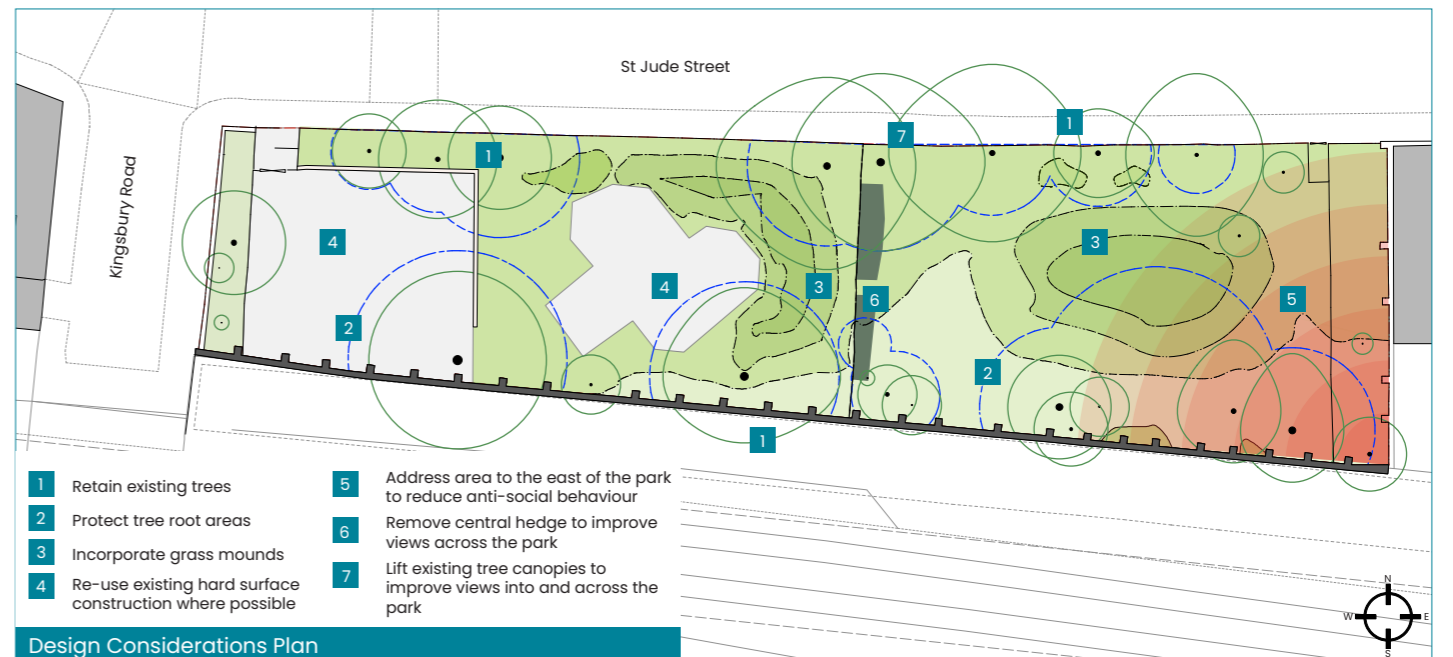
The existing park



Design considerations

St Jude's Street Garden is a small park, and therefore the following need to be considered as part of developing design concepts:

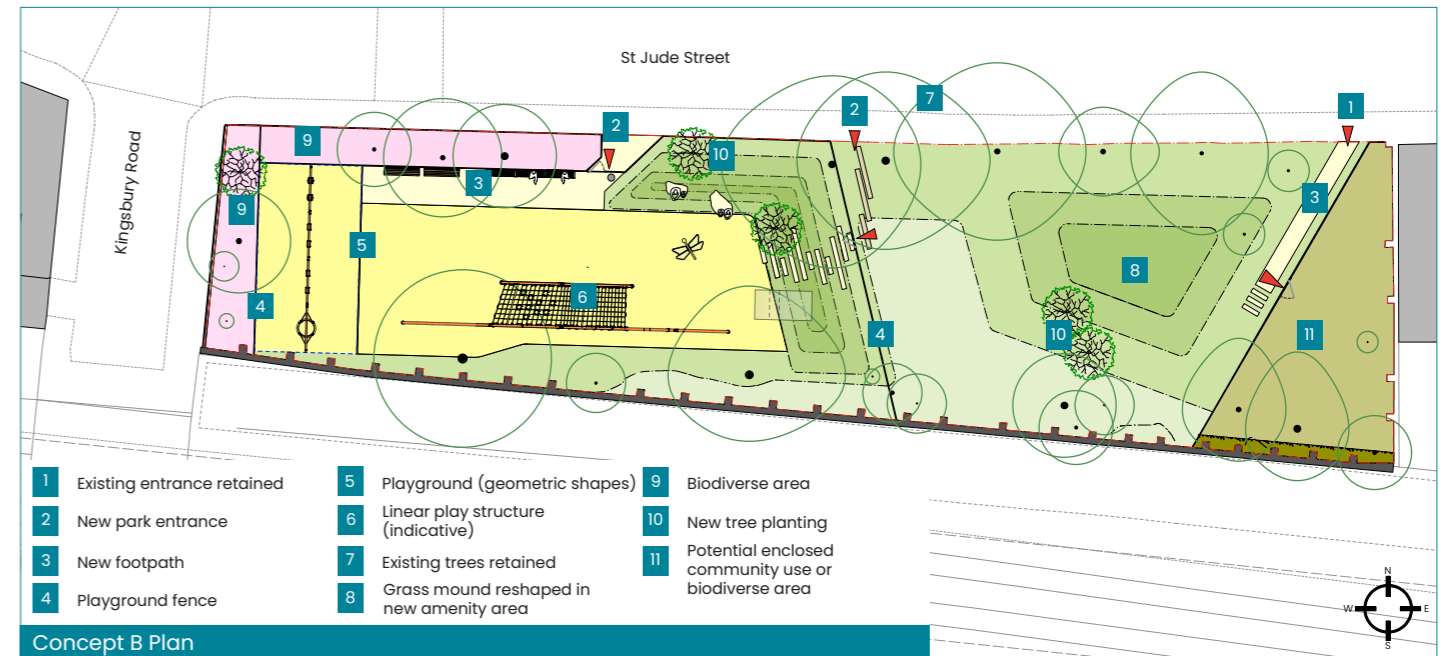
- The park is narrow in width.
- The existing trees are to be retained, including protecting the tree roots which extend into the grass mounds.
- There is limited visibility into the eastern side of the park (towards Dalston), which could be improved by removing the central hedge and lifting the canopies of adjacent trees.
- To promote sustainability, the ambition is to re-use hard surface construction within the existing playground as part of the works.



Concept option A



Concept option B



Organic playground idea with mounds



Geometric playground idea



New amenity area including footpath



Amenity area ideas



Ideas for enclosed community space



Ideas for enclosed community space



Community allotments

Community outdoor classroom

Wildlife garden

Council managed biodiverse garden

Q1

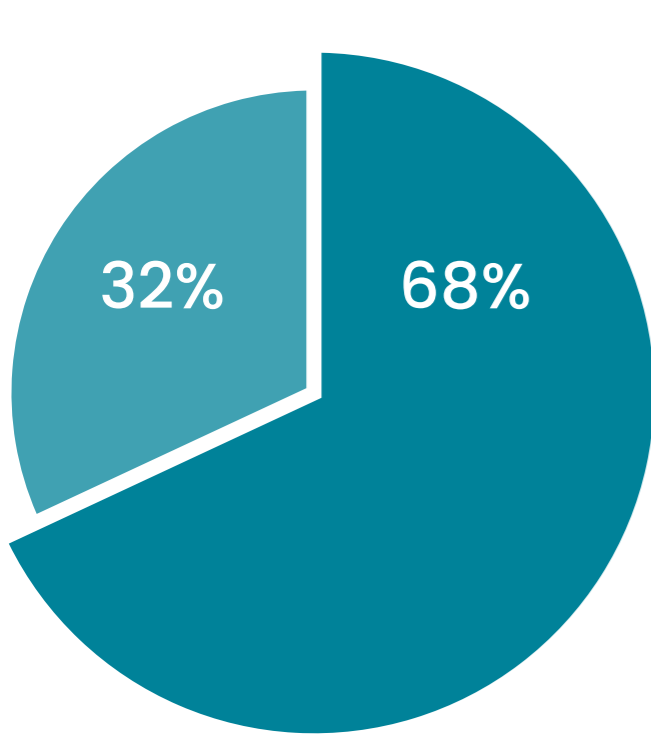
What do you like/dont like about concept design A?

Like (summary of key themes)

- Organic and mounded playground (11 of 42 comments)
- Community space (9 of 42 comments)
- General positive comments (8 of 42 comments)
- Helping to improve ASB (5 of 42 comments)
- Biodiversity improvements (4 of 42 comments)
- Amenity/social space (4 of 42 comments)
- Mounding (1 of 42 comments)

Dislike (summary of key themes)

- Playground (4 of 6 comments)
- Mounding to open up views (2 of 6 comments)



Q2

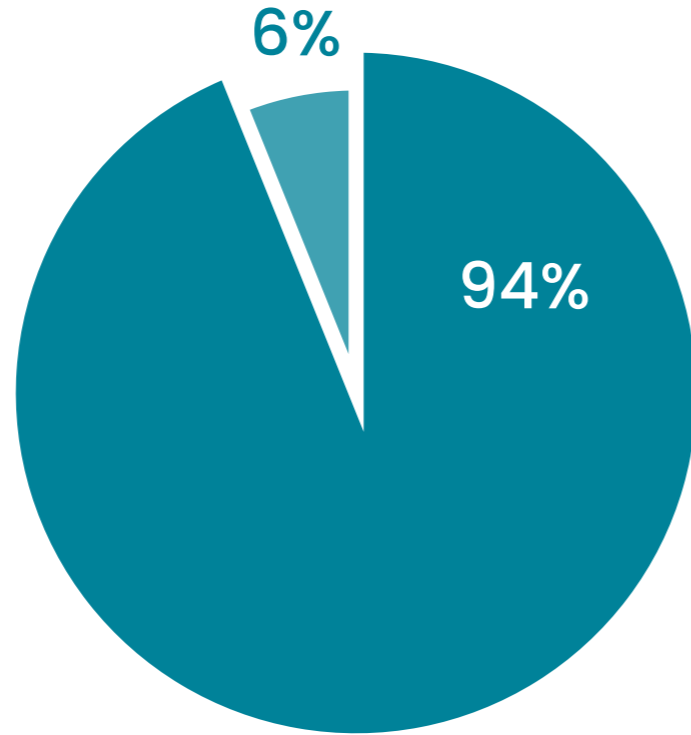
What do you like/dont like about concept design B?

Like (summary of key themes)

- General positive comments (9 of 24 comments)
- Playground (6 of 24 comments)
- Biodiversity (4 of 24 comments)
- Community space (3 of 24 comments)
- Amenity/social space (2 of 24 comments)

Dislike (summary of key themes)

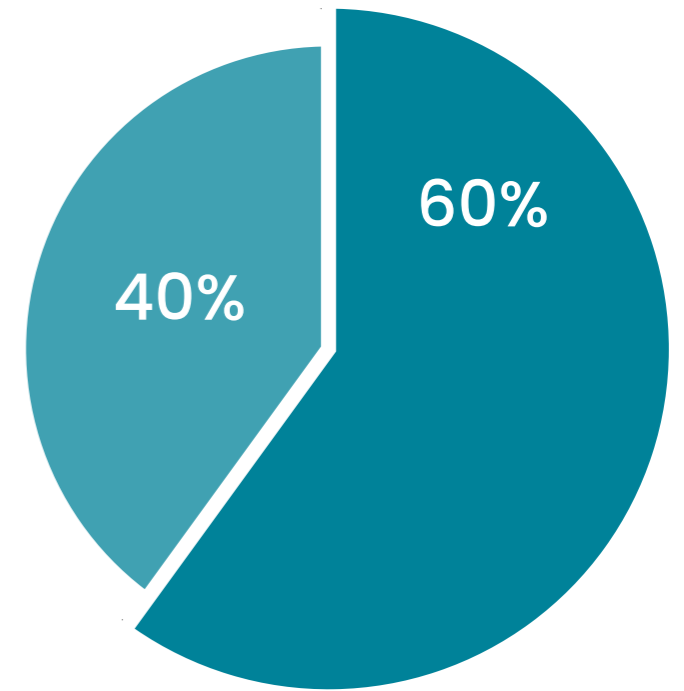
- Playground (7 of 11 comments)
- General comments (4 of 11 comments)



Q7

Do you have any other comments?

- General supportive comments (6 of 11 comments)
- Community space (3 of 11 comments)
- Social space (2 of 11 comments)



Q3

How would you like your playground to be?

More organic, with extensive use of natural materials (68%)

More linear/geometric (32%)

Q4

Do you support the idea of developing an enclosed community space in the corner of the park to try and reduce anti-social behaviour?

Yes (94%)

No (6%)

Q5

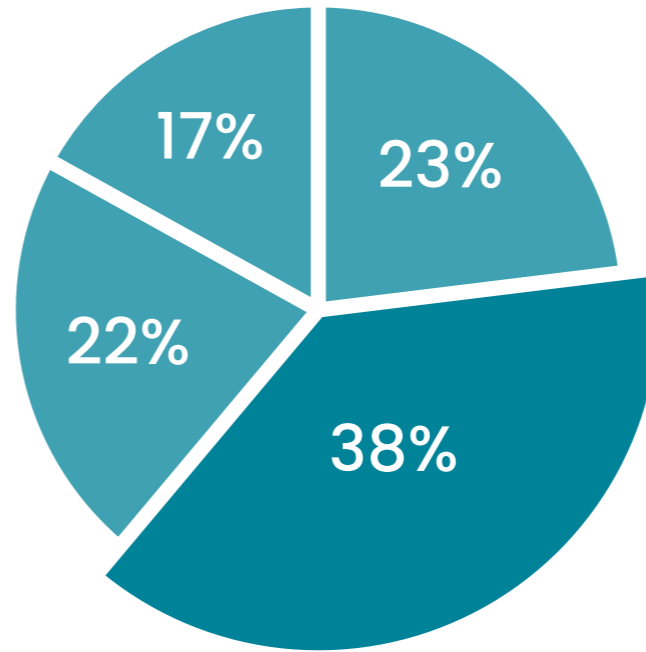
If yes (answer to question 4), which would you support?

Community food growing (23%)

Community or school outdoor classroom (38%)

Community led wildlife garden (22%)

Council managed biodiverse area (17%)

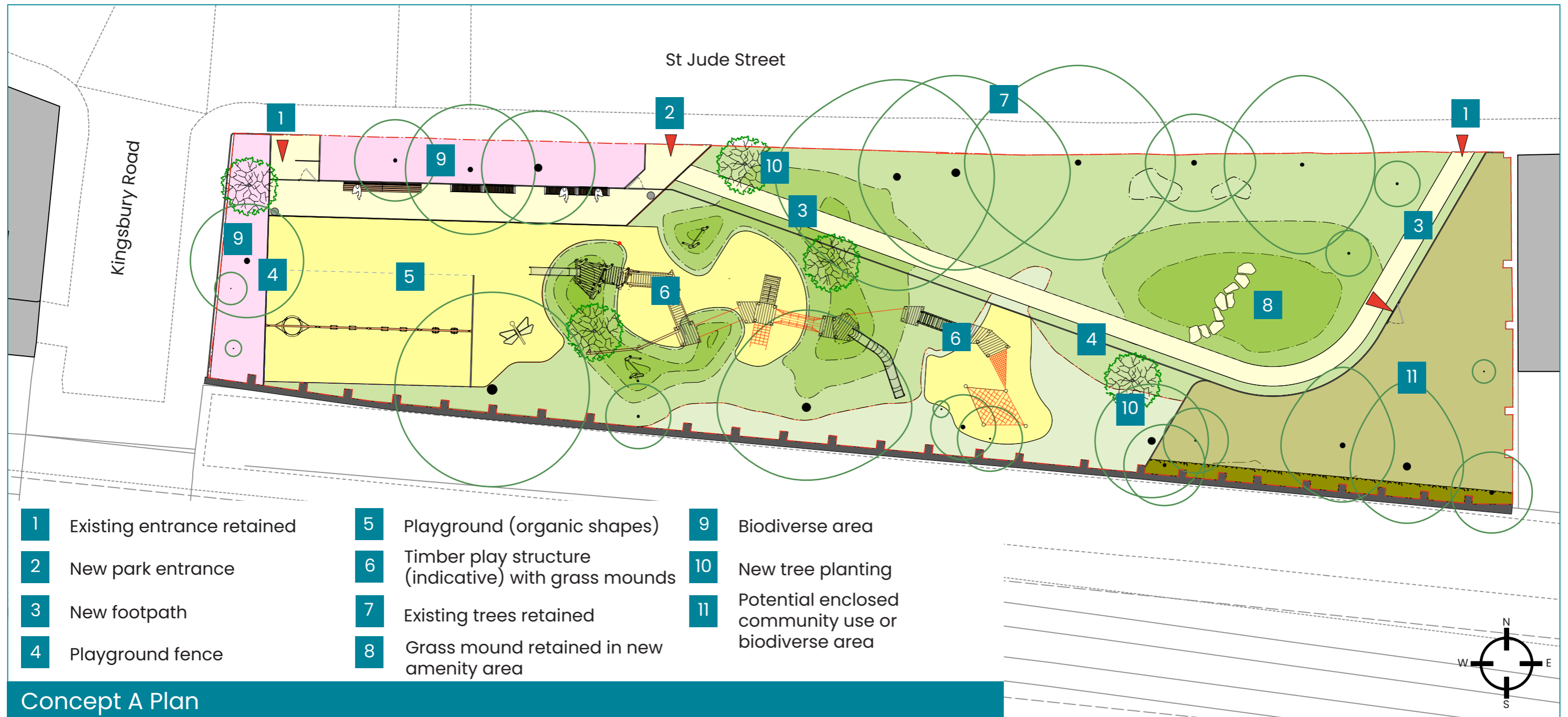


Q6

Would you be interested in taking part in a detailed design workshop to develop a community space if supported through this consultation?

Yes (60%)

No (40%)



Consultation Results Summary

- This engagement session had a very positive turnout, with **19 people expressing their interest in future engagement activities**.
- A **more organic layout** seems to be the most favourite approach, rather than the linear one.
- Many people mentioned the need of addressing the ASB issues, and **the majority is supportive of fencing off a corner of the park for addressing those issues** and re-purposing it for food growing, a community garden and/or a classroom for children.
- A few comments mentioned that they **would like to see more seating spaces** in the area.
- A recurrent comment seems to be the need to **enhance the greenery and biodiversity**.
- Most people are in favour of the **enhancement and expansion of the playground to cater for wider age groups**.

Further work in response to the consultation

- Playground detailed design through further engagement
- Resolve the eastern corner of the park through further consideration and engagement
- Mounding to amenity space in light of ground investigation results
- Incorporate more seating/social space
- To review and co-ordinate highways proposal for St Jude Street